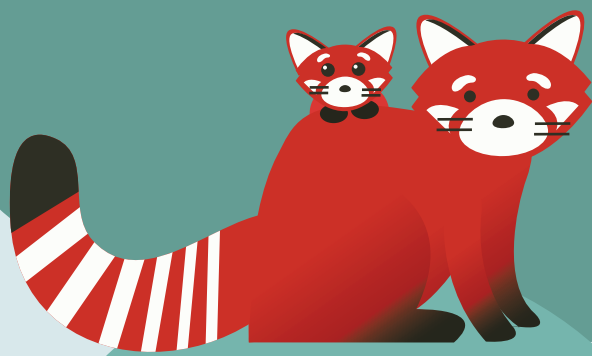


RED PANDA NETWORK

With your support, RPN targets to cover the entire red panda range area in Nepal by 2020

RED PANDA POPULATIONS ARE IN DECLINE

due to deforestation and fragmentation of their habitat along with poaching and inbreeding depression.



Red panda cubs have more than a **74% MORTALITY RATE**

Recent data suggests an estimated population of

500 INDIVIDUALS IN NEPAL

RPN outreach currently covers **50% of red panda range in Nepal.**

Listed as **endangered** on the **IUCN Red List**

The IUCN Red List estimates the population of this species to be fewer than

10,000 MATURE INDIVIDUALS WORLDWIDE

Nearly 7 cases of red panda crimes are reported annually in Nepal where roughly

90% OF WILDLIFE CRIME GOES UNNOTICED



Red Panda Network seeks to create the first protected corridor for red pandas in eastern Nepal.

Let's grow the **RED PANDA** family tree!

RedPandaNetwork.org

Support our fieldwork and help us fight wildlife crime!

THIS IS A PROTECTED HABITAT

