

All About RED PANDAS

Ailurus fulgens, or **the Firefox**

What do Red Pandas look like?

Head & Body 20-26" long

Tail 15-20" long



CAMOUFLAGE FUR

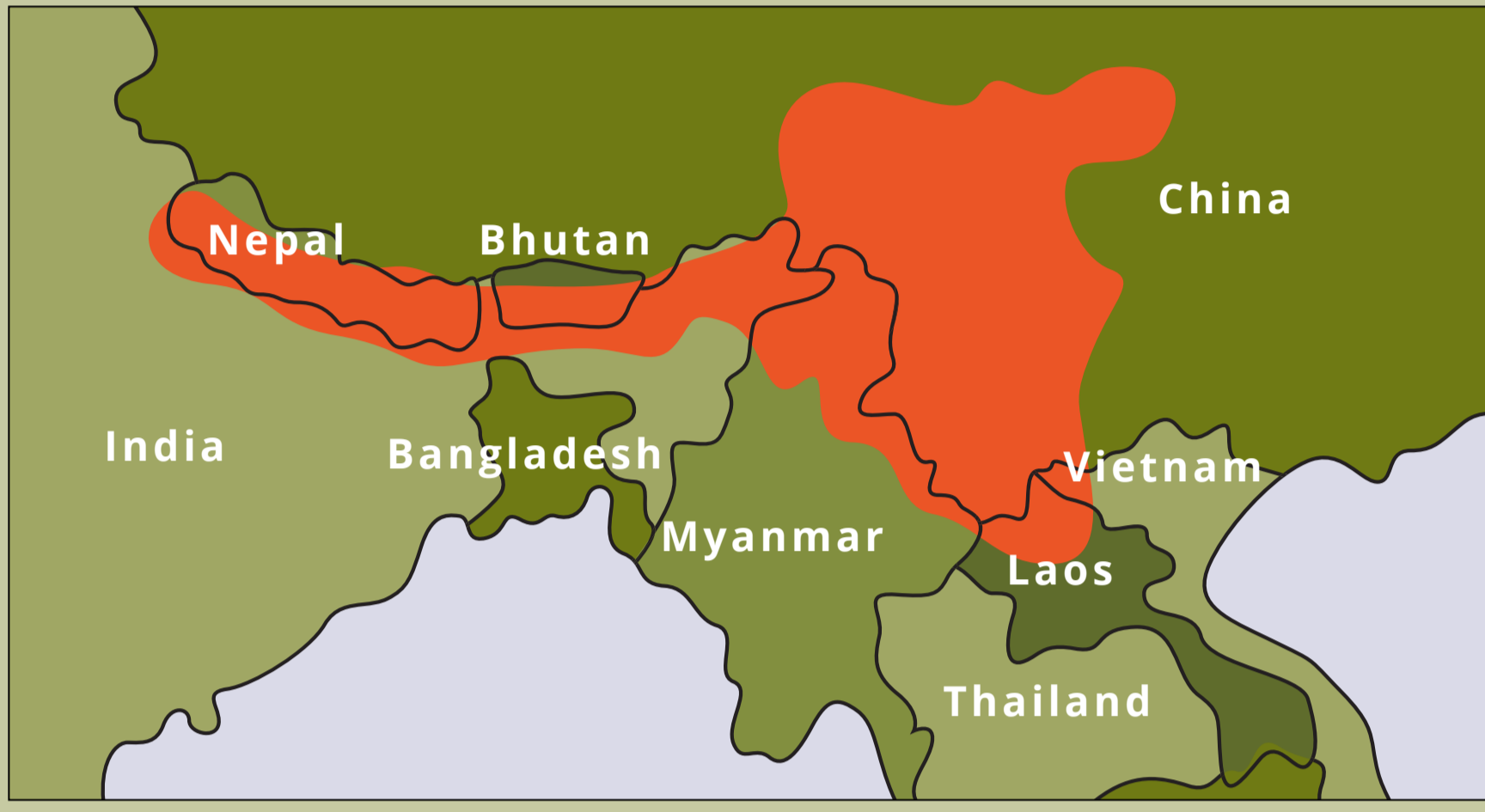
The red fur matches the moss found on the trees where they live. The black on their stomach makes it difficult for predators to spot them looking up into the trees.

FURRY FEET

The soles of Panda's feet are covered in fur to help keep them warm and grip onto slippery, mossy branches.

FLUFFY TAIL

The Firefox's tail helps them keep balance while climbing through trees. When it gets really cold, it is used as a blanket to keep them warm.



Where do they live?

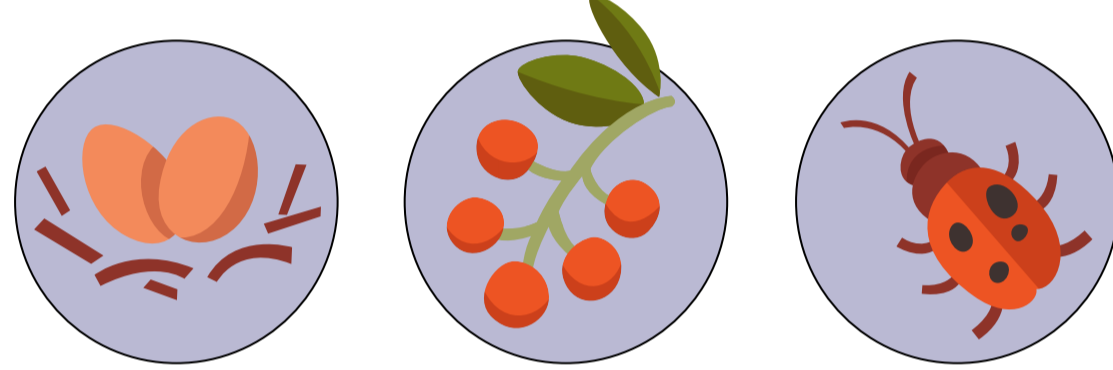
Red Pandas live in mountain forests of Nepal, India, Bhutan, China and Myanmar (Burma).

All Red Panda homes are in Asia's **HIGH ALTITUDE TEMPERATE FORESTS** that have **PLENTY OF BAMBOO**.

Red Panda habitat

What do Red Pandas Eat?

95% OF THE DIET IS BAMBOO



The other 5% includes eggs, berries, and insects



Red Pandas eat up to 20,000 leaves each day!

What About Their Behavior?

Red Pandas spend most of their time in trees (**ARBOREAL**) &

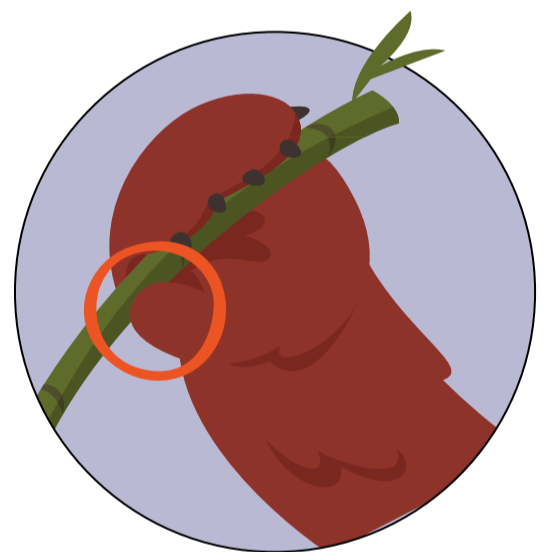
55% OF THEIR DAYS SLEEPING

Red Pandas are most active in the early morning and late afternoon (**CREPUSCULAR**).

They are normally solitary creatures but come together in pairs in the breeding season.

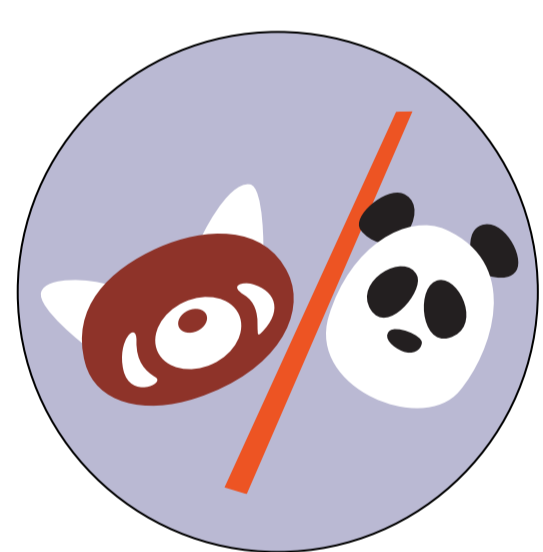
Red Pandas often communicate using body language (**HEAD BOBBING AND TAIL ARCHING**) and a variety of noises including the "**HUFF-QUACK**" and a "warning whistle."

Why are Red Pandas Unique?



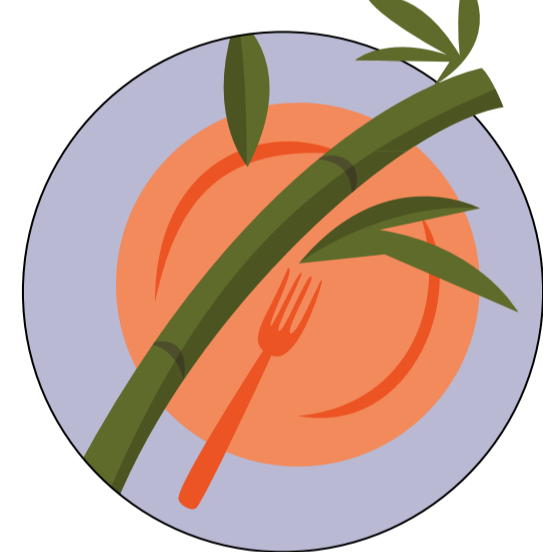
FALSE THUMB

Like Giant Pandas, Red Pandas have an extra "thumb," which is an enlarged bone for grabbing bamboo stems and tree branches.



FAMILY OF THEIR OWN

Red Pandas were discovered 50 years before the Giant Panda. They are the only member of their taxonomic family.



MOSTLY-VEGETARIAN CARNIVORE

Although classified as a carnivore, Red Pandas rarely eat meat.

What's The Red Panda Species Status?

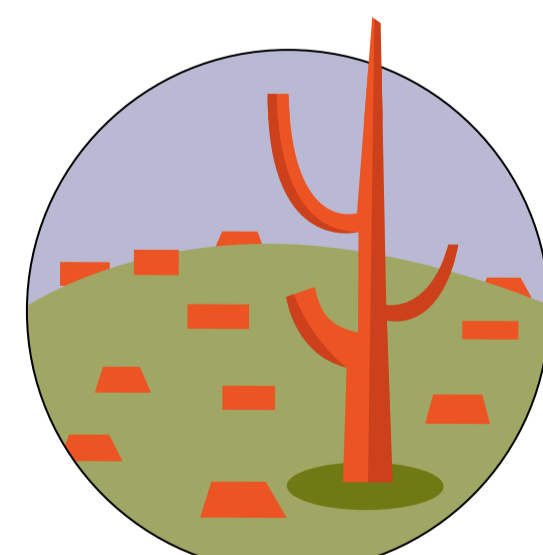
ENDANGERED

AS FEW AS **2,500** | **50% DECLINE**

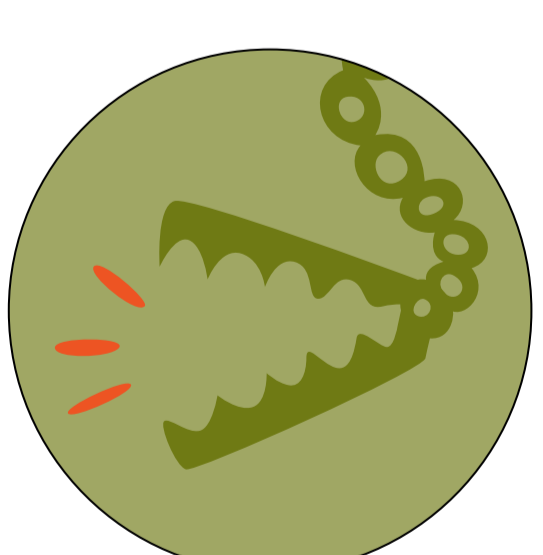
Red Pandas left in the wild

in the population in the last 20 years

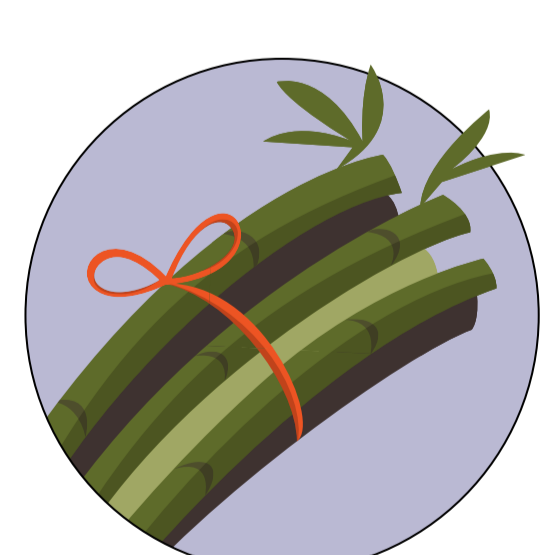
What is Threatening the Population?



HABITAT LOSS & FRAGMENTATION



ILLEGAL TRADE



EXPLOITATION OF FOREST RESOURCES

These reasons, along with **DISEASE AND CLIMATE CHANGE** have all contributed to the rapid decline in the Red Panda population.

How Can You Help?

TAKE ACTION!

BECOME AN ADVOCATE

Teach others about the unique traits of Red Pandas, and how they are an important reflection of the diverse ecosystem.

DONATE TO THE RPN

Your donation can help support the conservation efforts of the Red Panda Network.

SPONSOR A FOREST GUARDIAN

Support local people who monitor and protect the red panda habitat, as well as educate their local communities.

ADOPT A PANDA

The symbolic adoption goes directly towards supporting the Pandas and makes a great gift!

JOIN AN ECOTRIP

Experience Red Pandas in their native habitat and support the rural communities committed to protecting the forests.

VISIT RedPandaNetwork.org

Learn more about Red Pandas and how you can help.



RED PANDA NETWORK